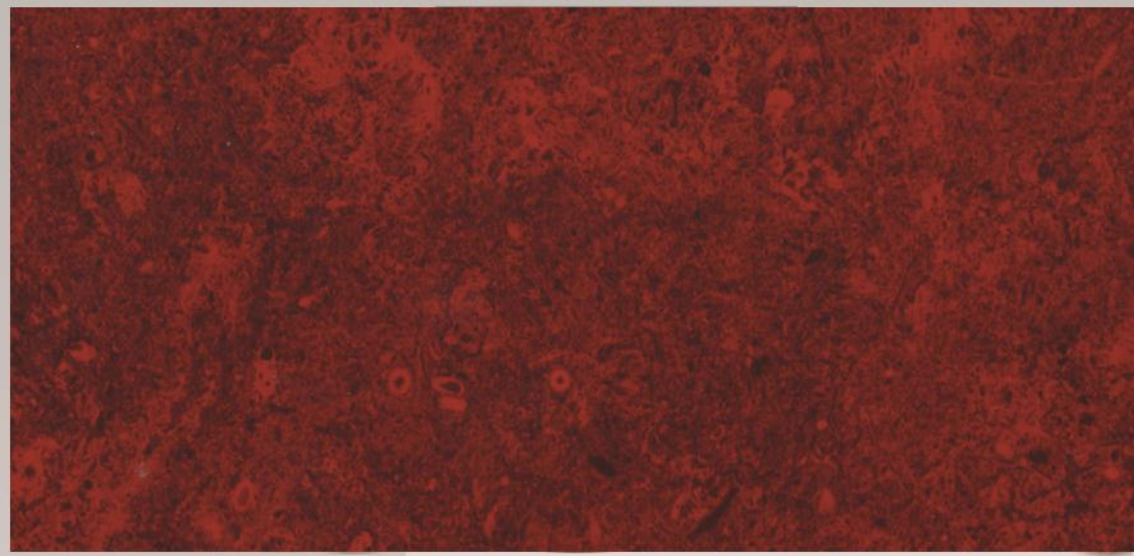


Effetto vetro colorato
Effetto vetro colorato
Effetto vetro colorato
Effetto vetro colorato



GLASS SERIE



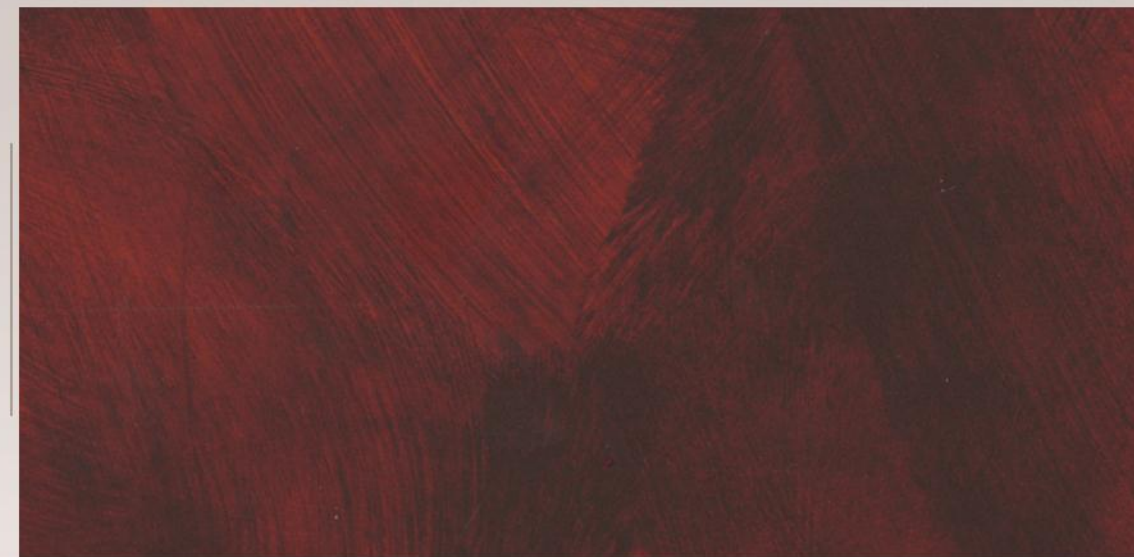
Powder Coating: GLASS-001 + Heat Transfer Film: 5026/02



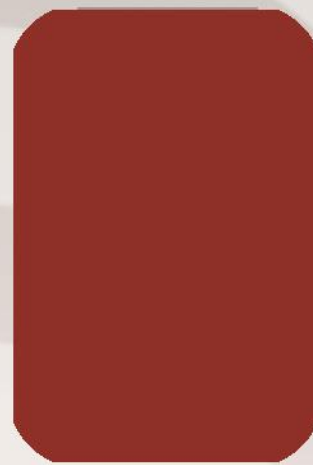
*Powder Coating:
GLASS-001*



Powder Coating: GLASS-001 + Heat Transfer Film: 6048/02



Powder Coating: GLASS-002 + Heat Transfer Film: 5007/01



*Powder Coating:
GLASS-002*



Powder Coating: GLASS-002 + Heat Transfer Film: 6047/03



Powder Coating: GLASS-003 + Heat Transfer Film: 5007/01



*Powder Coating:
GLASS-003*



Powder Coating: GLASS-003 + Heat Transfer Film: 6052/01



Viale del Lavoro, 5 - 37040 Arcole (VR)
Tel. +39 045 7639111 - Fax +39 045 7639100
info@decoral-system.com - www.decoral-system.com

Glass Serie

Test Report: Accelerated Weathering Test



LAB. ID NUMBER: 30612
 POWDER COATING: glass-001
 HEAT TRANSFER FILM: 5026/02
 Grey scale: 5/4
 residual gloss: 111%

LAB. ID NUMBER: 30615
 POWDER COATING: glass-001
 HEAT TRANSFER FILM: 6048/02
 Grey scale: 5/4
 residual gloss: 100%

LAB. ID NUMBER: 30619
 POWDER COATING: glass-002
 HEAT TRANSFER FILM: 5007/01
 Grey scale: 5/4
 residual gloss: 98%

LAB. ID NUMBER: 30622
 POWDER COATING: glass-002
 HEAT TRANSFER FILM: 6047/03
 Grey scale: 4
 residual gloss: 95%

LAB. ID NUMBER: 30627
 POWDER COATING: glass-003
 HEAT TRANSFER FILM: 5007/01
 Grey scale: 5/4
 residual gloss: 97%

LAB. ID NUMBER: 30632
 POWDER COATING: glass-003
 HEAT TRANSFER FILM: 6052/01
 Grey scale: 4
 residual gloss: 97%