



Marchi di qualità registrati di **Decoral System®**



## DECORAL SYSTEM SRL

Viale del Lavoro, 5 - Arcole 37040 (Verona) ITALY - Tel. +39 045 7639111 - Fax +39 045 7639100  
Email: [info@decoral-system.com](mailto:info@decoral-system.com) - Website: [www.decoral-system.com](http://www.decoral-system.com)

# TECHNICAL TOOLS

Ideas and applications for Decoral System products

## DECORATION OF PROFILES WITH FLAMES ON BOTH SIDES



### Key features:

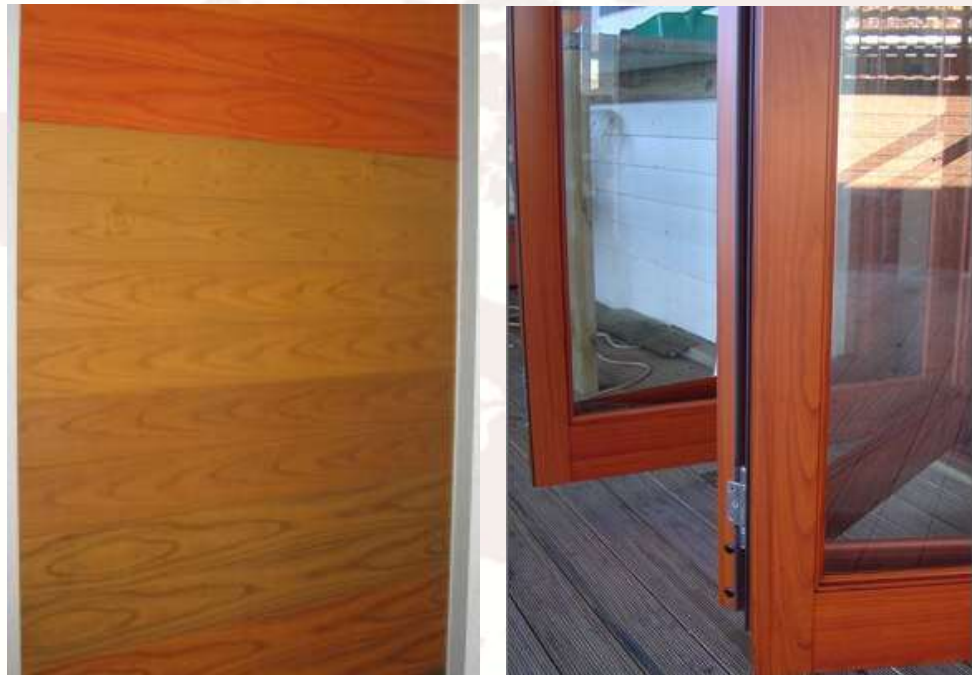
- Lengthwise decoration of profiles
- Proper selection of the portion of film
- Bagging technique
- Valorization of the wood effect

## DECORATION OF PROFILES WITH FLAMES ON BOTH SIDES

Final effect, technology and method

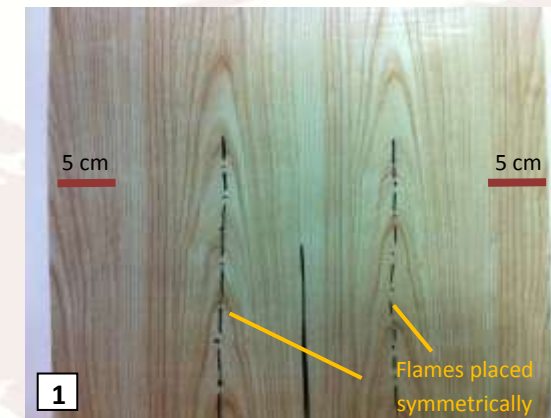
### Applications of the heat-transfer technology and possible effects

Heat-transfer technology is perfectly employed for the decoration of profiles and flat surfaces of various sizes, and it proves especially suitable for the lengthwise decoration of profiles. It is thus possible to obtain final wood effects almost undistinguishable from real wood manufacturing, and valorize at the same time the flames and the grain that characterize a particular kind of wood.



### Method and technology

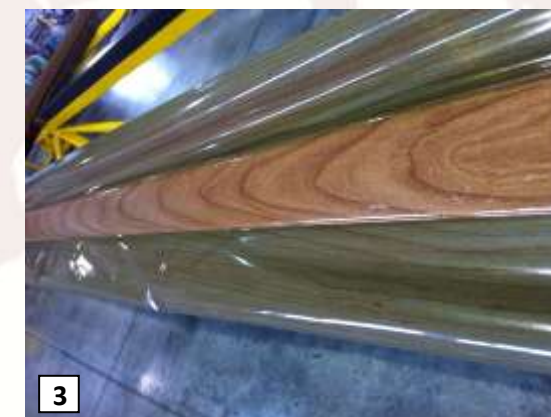
The method shown below allows a uniform effect on both exposed sides of a profile: by selecting a proper portion of the decor and by preparing the heat-transfer film on the surface to be decorated, it is possible to obtain the characteristic flames of the wood in the most exposed areas of the profile, thus valorizing at its best the wood effect.



1 Select a portion of the film that comprises two flames, symmetrically placed to one another; then, cut the film on the borders, leaving 5 cm on the outer side of each flame.



2 Fold the film overlapping the two flames and close it to form a bag. Insert the profile and vacuum: the bag obtained displays a flame on each side of the profile.



3 Upper side of the profile: the flame is clearly visible well centered on the whole length.



4 Lower side of the profile: also here the flame is well centered.